

## Anti-RSRC1 Polyclonal Antibody

Cat: AC53905

### Summary:

**【Product name】** : AC53905

**【source】** : Rabbit

**【Isotype】** : IgG

**【Purification】** : Affinity purification

**【Gene ID】** : 51319

**【Swiss Prot】** : Q96IZ7

**【Calculated】** : 39kDa

**【Species reactivity】** : Rat ; Mouse ; Human

**【Tested applications】** : IF ; IHC ; WB

**【Recommended dilution】** : WB 1:500-2000.IHC 1:50-100.IF 1:50-100.

**【Subcellular location】** : Cytoplasm Nucleus Nucleus speckle

**【Immunogen】** : Recombinant protein of human RSRC1

**【Public Immunogen Range】** : 117-276aa

**【Storage】** : Store at -20°C.Avoid freeze / thaw cycles.

### Background:

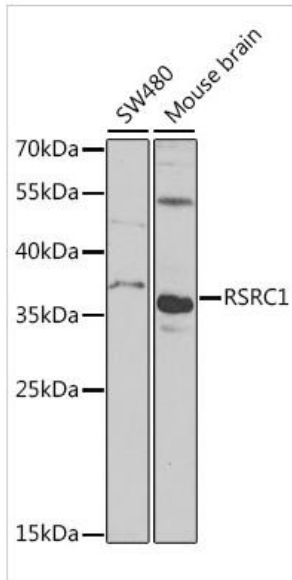
This gene encodes a member of the serine and arginine rich-related protein family. The encoded protein is involved in both constitutive and alternative mRNA splicing.This gene may be associated

产品仅供科研!

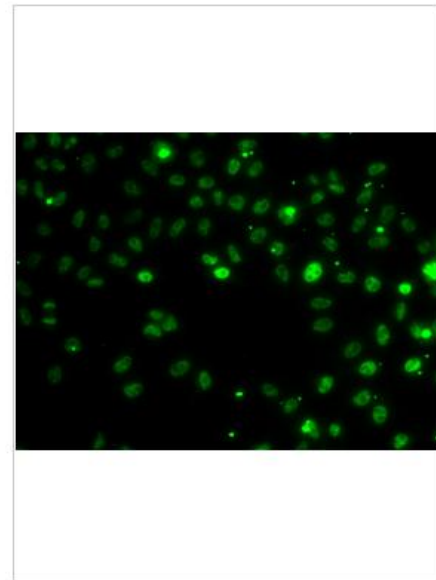


with schizophrenia. A pseudogene of this gene is located on chromosome 9. Alternative splicing results in multiple transcript variants encoding different isoforms.

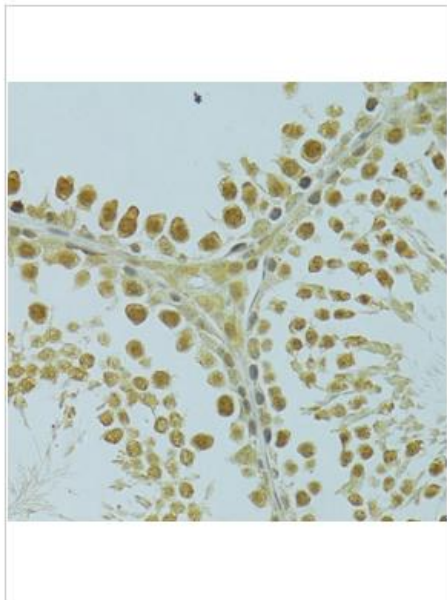
Verified picture:



Western blot analysis with RSRC1 antibody diluted at 1:1000; Lane: SW480 Mouse brain.



Immunofluorescence analysis of MCF7 cell using RSRC1 antibody.



Immunohistochemistry of paraffin-embedded rat testis with RSRC1 antibody diluted at 1:75.